

ISO 9001
ISO 14001
OHSAS 18001
BUREAU VERITAS
Certification



ELECTROMECHANICAL INTEGRAL SERVICE

elinser

ELECTROMECHANICAL INTEGRAL SERVICE

www.elinser.com

ELECTROMECHANICAL INTEGRAL SERVICE

ELINSER was born from the illusion of carrying out an innovative project in its sector thanks to our staff highly qualified to deal with different projects, to provide comprehensive solutions to all requirement related to national and international territory. This global project management is the result of the experience, effort and dedication of our staff in the field of transformers for many years.

ELINSER

ELECTROMECHANICAL INTEGRAL SERVICE



ELINSER'S BACKGROUND

- 15 years of experience in the substation sector, high voltage and very high-voltage.
- Extensive knowledge of services we offer and availability of our team of experts.
- Experience in outdoor substations, closed buildings and underground facilities.
- Machinery and effective team work.




OUR PURPOSE


- Provide the customer with an electromechanical service, transport, installation, maintenance, transformers repair and components supply.
- Provide solutions to our clients, managing integrated, engineering projects, installation and execution.
- Total availability for emergency services, maintenance or fault repair.

Elinser
ELECTROMECHANICAL INTEGRAL SERVICE



SERVICES: Power Transformer assembly and supervision

 Power transformer supervision, electromechanical assembly and disassembly in electrical substations.

 We supervise the movement, unloading and installation of the transformer, for this we have skilled workers acting as assembly supervisors, having been trained directly in the factories of transformers of our main customers.



SERVICES: Transportation, loading and unloading of transformers

One of the most important services of ELINSER is called FULL TRANSFORMER SERVICE. This service includes loading at origin, transport, unloading at destination, assembly and testing the transformer in its final location, planning the timing of each phase to ensure the final delivery success.

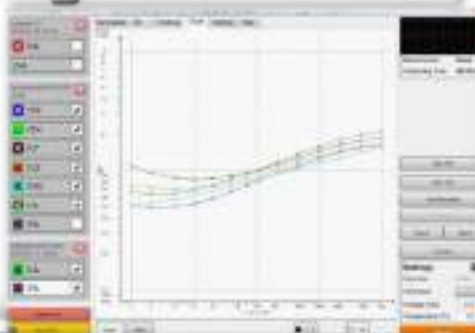
This service is performed for both new transformers and those which are already in service and need a change of location.



SERVICES: Testing of transformers

We have transformer testing equipment to perform the necessary measures for the transformer start-up through following tests:

- Turn Ratio Test
- Insulation Resistance
- Winding resistance measurement
- Breakdown voltage
- Tan Delta
- Fra-Analyzer (SFRA)
- Paper Humidity (FDS)



These tests allow us to know the status of the transformer and the follow-up, informing our client of the actions to take depending on the technical collected data.

SERVICES: Containers to move easy in Europe



SERVICES: Testing of substation switchgear



We have equipment to carry out the testing of switchgear of substations for any voltage. This switchgear is able to test TCs, TTs, power circuit breakers and disconnectors. Said testing we are able to carry out with personnel qualifications and Megger Trax 220 y TDX120 equipment, it can work up to 800 A.



SERVICES: Filtering, degassing and dehydrating dielectric oil

We have several filtration plants with a maximum flow of 12,000 l/h and an electrical power of 160 kVA. The oil takes an exhaustive through the interior of the circuit available in plants, thereby ensuring the proper filtering, degassing and dehydrating.



SERVICIOS: Regenerado de aceite dieléctrico

In addition to filtering equipment, we have regeneration equipment of dielectric oil. With these equipment we will get the values required of the color index, neutralization and loss factor, leaving the dielectric oil operating in optimum conditions.



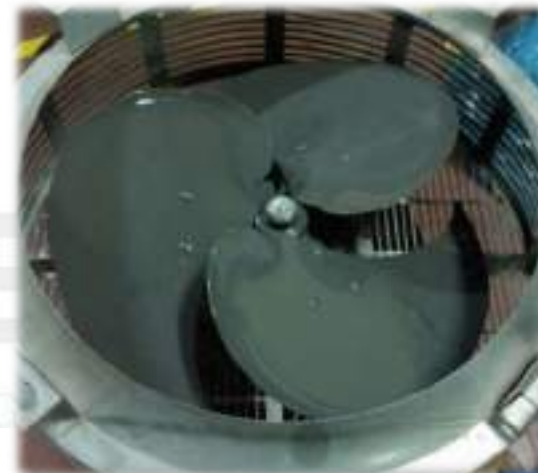
SERVICES: Repair of radiators and accessories

An important service for our clients is repairing radiators and accessories of the transformer since on several occasion it is unlikely to find spare parts because they are already discontinued . We are able to do this repair, in steel, aluminum, copper and stainless steel via welding **TIC**, **MIG**, **electrode** and so on.

BEFORE



AFTER



SERVICES: Radiator Repair and Painting

An important service for our customers is repairing, leak-testing at 2 bar and painting radiators with elements of sizes 230, 350 or 520 mm.

BEFORE



AFTER



SERVICES: Transformer tank repair

For any oil leaks in tanks or transformer radiators, we are able to repair it without having to empty the oil from the inside, since we have qualified and experienced staff.

BEFORE



AFTER



ELECTRICAL INTEGRAL SERVICE

SERVICES: Repair and painting of deposits and cisterns

Another service we provide is the repair of deposits and cisterns by welding any potential leaks or pores and painting the surface by professional paint, giving a long term durability to the deposit.

BEFORE



AFTER



SERVICES: Washing, Degreasing and Painting Transformers

Recovery corrosion protection system of transformer. We carry out external degreasing of the affected area, sanding and subsequent paint application.

Besides external recovering, we also make the correction of dielectric oil leaks, changing clamping rings from removable parts making a dielectric oil drain if it is necessary.

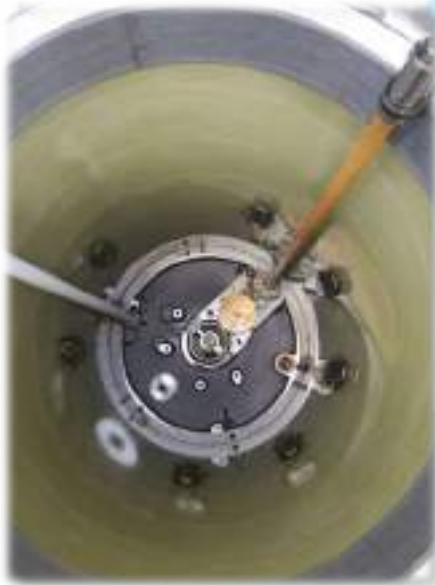


Prolong the life of your transformer



SERVICES: Maintenance of top changers

ELINSER provides a complete range of services for the transformers. In order to compliment the range of services ELINSER carries out the maintenance of the Top Changers. These services include maintenance of contacts, resistance, operations, and electrical testing.

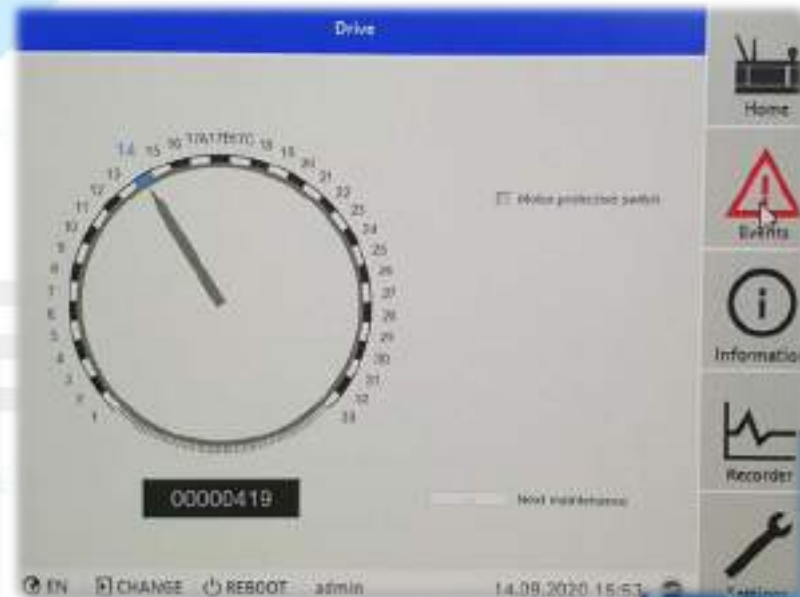


ELECTROMECC

S

SERVICE: INSTALLATION OF ETOS

ETOS is a system provided by MR Factory, it gives us the possibility to set up everything related to a power Transformer, named signals and actions so as to control practically and easily what comes to mind, for instance Tap Changer position, Temperatura, Cooling and its setup.



SERVICIOS: Cisternas de Almacenamiento

We have in our disposition 22,000 litre storage tanks so as to carry out untanking and all interventions inside the transformer.

Our tanks have lower and upper filter sockets for oil treatment, they are also vaporized, and ready to perform any intervention.



SERVICES: Repair on-site

In some cases, we can repair a breakdown on-site without needing to take it to the factory, saving great costs and time of service.



MECHANICAL

SERVICES: Repair of distribution transformers

This service we offer to clients with many transformers of 1.000 kVA. Like ADIF, glass factories, steel factories, etc.

BEFORE



AFTER



SERVICES: Transformers winding and motors

En parallel to our maintenance and improvement, Elinser is offering a specific service foreseen for winding and an overhaul service in regards with Power Transformers up to 12 MVA and Motors up to 315 kW.

TRANSFORMERS



MOTORS



SERVICES: Cooling system solutions

Integral change of cooling system. We design, supply and change the entire cooling system of your transformers, replacing old radiators for new ones, whether standardized or not, designing new flanges and pipes to adapt the existing.



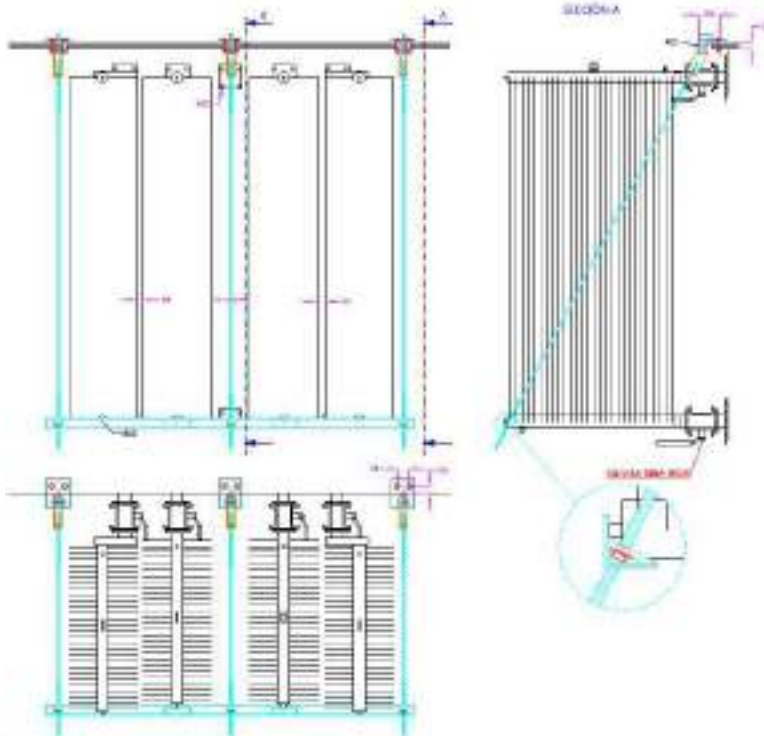
BEFORE

AFTER

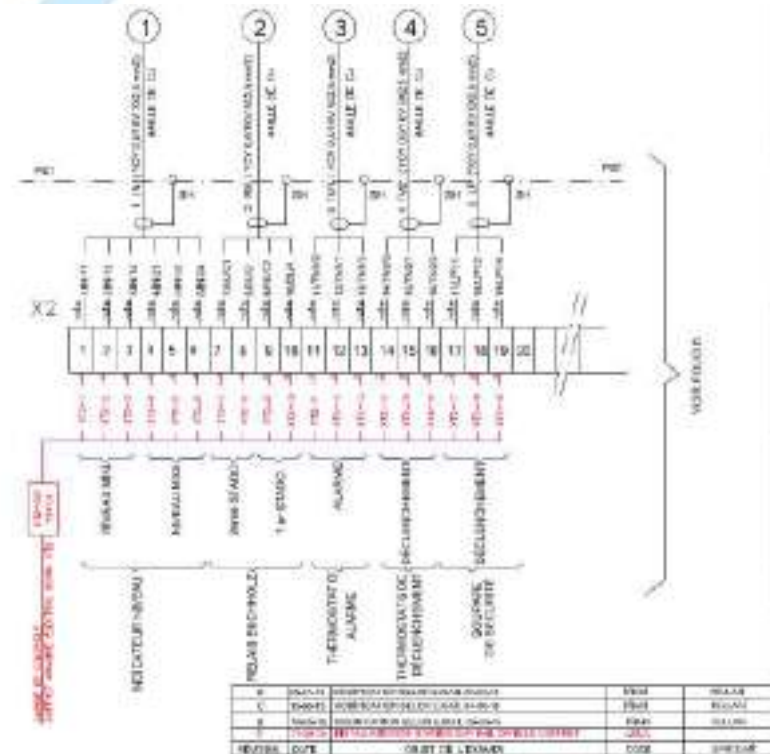
SERVICES: Mechanical and electrical engineering

Elinser offer transformer mechanical and electrical engineering services tailored to the specific needs of our clients. We upgrade transformer cooling systems, wiring and electrical protections.

Mechanical engineering



Electric engineering



TRANSFORMER ACCESSORIES SUPPLY

Another service we offer, is the supply of all transformer accessories that are worn out and require replacement or which have suffered any damage.



SERVICE: ELECTRIC INSTALLATION HV y LV

In regards with HV and LV, We have in our disposition a skilled personnel experienced in terms of installation, Maintenance and Electrical Panels Test, Cabinets, and transformation centers.



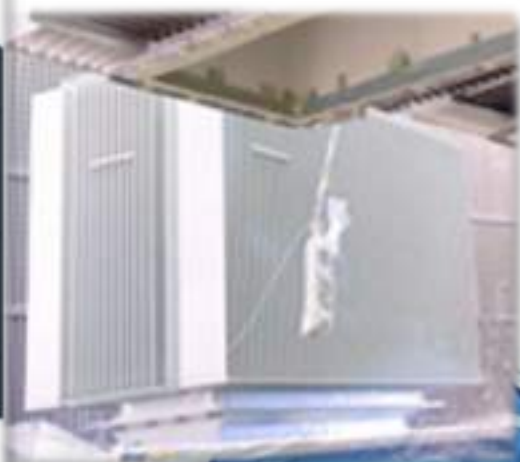
INTEGRAL SERVICE



SUPPLY OF TANKS AND RADIATORS

Besides offering any transformer accessories, we also supply any radiators between 1.000 to 3.500mm and up to 36 elements, and fin tanks up to 10 MVA.

| Produktbezeichnung | WANDER 2-11 | WANDER 2-11 | WANDER 2-11 | WANDER 2-11 |
|--------------------|-----------------|-----------------|----------------|-----------------|
| Mark USA | Mark USA | Mark USA | Mark USA | Mark USA |
| Inzahl Glieder | n = 2 - 36 | n = 2 - 36 | No of elements | n = 2 - 36 |
| Stärke a | a = 60 - 250 mm | a = 60 - 250 mm | Dim. a | a = 60 - 250 mm |
| Normen | nach DIN 42558 | nach DIN 42558 | spaced iron | nach DIN 42558 |



SERVICES: INTEGRAL PROJECT MANAGEMENT "TURNKEY"



WE OFFER OUR CLIENTS PROJECT MANAGEMENT, GIVING AN INTEGRAL SOLUTION FOR ENGINEERING, ASSEMBLING OR REPOWERING SUBSTATION TRANSFORMER POSITIONS.

ELINSER
ELECTROMECHANICAL INTEGRAL SERVICE



CERTIFICATES



YOUR SATISFACTION IS OUR OBJECTIVE

Cette message se lui répondu a renvoi de.
Message envoyé avec Hypotexte Alta.

De: nicolas.terro@schneider-electric.com
 Para: International Elner
 CC: Francisco.puerta@elner.com; gregory.traf@schneider-electric.com; jose.iva@elner.com
 Asunto: RE: Montage d'un transformateur de 63 kV sur la commune de Fouquierlande

Message: 085 SCHNEIDER.pdf (616 KB)

Bonjour

Tout d'abord je tenais à vous féliciter pour l'intervention qui s'est très bien déroulée avec un grand professionnalisme.

Veuillez trouver ci joint les éléments demandés.

Merci

Sits

| | | |
|--|--|--|
| NICOLAS TERRERO Chef de Projet Service - Spéciale HTB Centre d'Application Distribution Electrique Service Clients Schneider Electric | 0 89 82 14 26 Y1 0 06 47 87 18 89 nicolas.terro@schneider-electric.com 0 00 82 14 26 82 | 4 Rue Roger Carassolet BP 34750 31887 TOULOUSE CEDEX 4 France |
|--|--|--|



De: Cyrille SURGI (cyrille.surgi@edf.fr)
 Para: francisco@elner.com; francisco.vic@elner.com
 CC: international@elner.com
 Asunto: Transformateur T2 - Cize-Balazon

Message: PV de recouvrement et de transfert pour consignation p&f cap (372 KB)
 PV de recouvrement ALMARGO n°500728 (29 KB)
 Schémas électriques offert corrigés p&f cap (2 MB)
 A70099158 (2 KB)

Bonjour Mère BARAJAZARZA et M. PUERTA.

Je vous envoie ce mail suite à la fin des travaux sur site de l'entreprise ELINER pour le réglage/besset du transformateur T2 de Fouze de Cize-Balazon. Les essais de mise en service du transformateur se sont terminés mercredi 30/07/2014 et le groupe G2 a été remis en exploitation ce matin.

Je tiens tout d'abord à vous remercier pour votre accueil et votre satisfaction de la prestation réalisée sur site par l'équipe chantier ELINER.

Vous trouverez ci-joint le PV de recouvrement signé sur site à la fin du montage.

Je reste à votre disposition pour toute reconnaissance complémentaire.

Salutations,

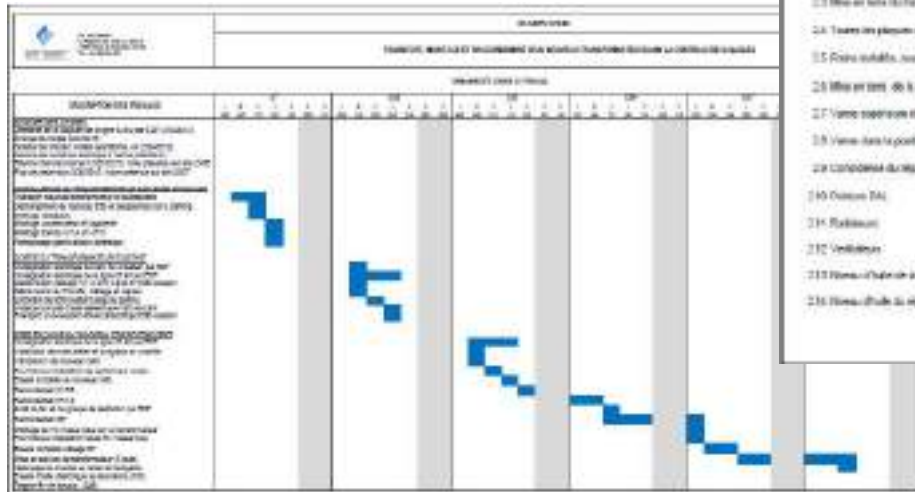
 **EDF** CYRILLE SURGI
 Chef de projet
 EDF - C&A - Service Clientèle

cyrille.surgi@edf.fr
 Tél. 01 89 21 81 43
 Tél. mobile : 06 84 00 44 28
 Fax : 01 89 20 50 12

 Un guide simple pour l'abonnement et l'impression de messages que vous recevez avec Outlook

WE PREPARE ALL KINDS OF WORK REPORTS

- Risk Analysis Report
- Operating Mode Report
- Scheduling
- Testing Procedures Report
- Completion Reporting



This is a detailed inspection and test protocol form for transformer work. It includes the following sections:

- Header:** Logo of the company and the title 'PROTOCOLE DE MISE EN SERVICE DE TRANSFORMATEURS DE TENSIONS'.
- 1. Identification et développement des tâches à réaliser:** A table with columns for 'Atelier', 'Date', 'Cible', 'Cible qualité', 'Cible', and 'Responsable', with corresponding fields for 'Niveau de détail', 'Niveau d'essai', 'Groupe de connexion', 'Circuit et élément', 'Caractéristiques techniques', and 'Composants de pièces en position'.
- 2. Contrôle visuel général:** A list of 16 items to be checked, each with a corresponding checkbox. The items include:
 - 21 Vérification de l'état de la surface du transformateur
 - 22 Vérification de la présence des accessoires joints et état de la surface
 - 23 Mise en service du transformateur en HTD (HTS)
 - 24 Toutes les pièces ont-elles été vérifiées et assemblées adéquates
 - 25 Pièces substituées, avec étiquettes, étiquettes de vérification des numéros
 - 26 Mise en service de la ligne de transformation
 - 27 Vérifier l'absence de défauts des conducteurs ouverts
 - 28 Vérifier dans la position correcte et l'absence de défauts de transformation
 - 29 Conformité du réglage de position de charge avec l'opérateur de bureau
 - 30 Contrôle DAJ
 - 31 Rubrique
 - 32 Vérification
 - 33 Révision de l'état de la ligne
 - 34 Révision de l'état de la ligne

This is an inspection and test report for transformer work. It includes the following sections:

- Header:** Logo of the company and the title 'RAPPORT D'INSPECTION ET ESSAIS TRANSFORMATEUR 46845 DANS LA CENTRALE DE LES SAELLES'.
- Tableau récapitulatif des versions:** A table with columns for 'Date', 'Version', 'Auteur', and 'Description'. It shows a version dated 20-06-2014 with version 'R&S', author 'Gomez', and description 'Création'.
- Signature and Date:** A section for the author's signature and date, with the date '20-06-2014'.
- Footer:** Company logo and contact information.



EXPERIENCE

ISO 9001
ISO 14001
OHSAS 18001
BUREAU VERITAS
Certification



| TRABAJOS REALIZADOS | LOCALIZACIÓN | CLIENTE |
|--|---|------------------------|
| Suministro de 17 radiadores 2000-520x24 galvanizados | Plasencia, Cáceres | ETESA |
| Transporte, desmontaje, movimientos, montaje, ensayos y conexionado T2 | CH Cize-Bolozon, Corveissiat, Francia | EDF |
| Transporte, montaje y filtrado de 2 40 MVA y 66 Kv | SE Granadilla y Dique del Este, Tenerife | SGB |
| Tercer tren PEMEX México. Montaje, tratamiento de aceite y ensayos transformador 210 MVA, transformador 55 MVA y transformador 16 MVA. | México | ABENCOR |
| Transporte ,Montaje y Ensayos a un transformador | SE San Rafael, Málaga | TES |
| Transporte, montaje y filtrado de 2 transformadores de 40 MVA y 66 Kv | SE Los Negros, Jerez | ALKARGO |
| Montaje, llenado parcial y ensayos de dos trafos 30 MVA | Jorf Lasfar, Marruecos | ALKARGO |
| Tratamiento aceite y llenado 4 trafos con 15.600 kg | Salvatierra, Vitoria | SGB |
| Reacondicionado, reparación de poros y pintado de dos transformadores de 20 MVA | Almería | COBRA |
| Montaje y ensayos dos trafos 40 MVA, 170 kV | PE Pintado, Uruguay | SGB |
| Suministro y montaje de 30 radiadores para transformador SIEMENS de 60 MVA | CT Bahía de Algeciras | ENDESA DISTRIBUCIÓN |
| Filtrado de un transformador S.E Pekin | Rentería, Guipúzcoa | ALKARGO |
| Supervisión y montaje de un transformador Siemens de 40 MVA | Central Petrolífera en Libia | SIEMENS |
| Ensayos de dos transformadores de 40 MVA y 66/22 kV | SE La Paterna y Mazagan | SGB |

EXPERIENCE

ISO 9001
ISO 14001
DNVSAAS 11001
BUREAU VERITAS
Certification



| TRABAJOS REALIZADOS | LOCALIZACIÓN | CLIENTE |
|--|---|------------------|
| Supervisión, montaje y filtrado de transformador SGB de 60 MVA 225/31,5 kV | SE Zamudio (Bizkaia) | IBERDROLA |
| Suministro de bornas, ventiladores, sobrepresión, bucholz, jansen y diferente material de repuesto para un transformador | SE Valle, Jerez de la Fra. | COBRA |
| Realización de diferentes ensayos (Aislamiento, resistencia, relación, tang delta, etc) | Konstantynów, Polonia | SIEMENS |
| Realización de ensayos FRA a varios transformadores | SE Tuzla, Turquía | SIEMENS |
| Reparación 4 radiadores | SE Gabia, granada | ENDESA |
| Suministro Aerorefrigerador 300 kW de refrigeración | SE Vandellos, Tarragona | SPARK-IBERICA |
| Supervisión y realización de informe técnico de 10 transformadores | Kabul, Jalalabad, Kandahar (Afganistan) | CROMPTON GREAVES |
| Suministro de varias válvulas DN41 | Sevilla | ELECNOR |
| Soldadura de poros en la cuba de un transformador de potencia | Seseña, Toledo | SIEMENS |
| Montaje y tratamiento aceite de un transformador 20/25 MVA, 45/21 kV | Cáceres | IMEFY |
| Desmontaje, embalado y gestión de un transformador de 20/25 MVA y 45/21 kV | Cáceres | IMEGY |
| Montaje y ensayos de trafo 30 MVA y 115/20 kV | SE Cienfuegos, Cuba | SGB |
| Filtrado de transformador | SE Buenos Aires | ALKARGO |

CLIENTS

INTERNATIONAL



NATIONAL





WE ARE LOOKING FORWARD TO WORKING WITH YOU

elinser
ELECTROMECHANICAL INTEGRAL SERVICE

